



freedom

freeConnect Smart G2400

**24-Port 10/100/1000Mbps
Web Smart Switch**

USER'S MANUAL

**P/N: S112410000
Rev. 1.0**

Copyright and Trademark Information

This document contains proprietary information that is protected by copyright. All rights reserved. No part of this document may be photocopied, reproduced, or translated into another language without express prior to written consent of Freedom9 inc.

© Copyright 2006, freeConnect Smart and the freedom9 company logo are trademarks or registered trademarks of Freedom9 Inc. All rights reserved. Windows is a trademark or registered trademark of Microsoft Corporation. Other trademarks or registered trademarks are the property of their respective holders.

TABLE OF CONTENTS

1	ABOUT THIS GUIDE.....	1
	1.1 PURPOSE	1
	1.2 TERMS/USAGE	1
2	INTRODUCTION	2
	2.1 GIGABIT ETHERNET TECHNOLOGY	2
	2.2 FAST ETHERNET TECHNOLOGY.....	2
	2.3 VLAN (VIRTUAL LOCAL AREA NETWORK).....	2
	2.4 FEATURES	3
3	UNPACKING AND INSTALLATION.....	4
	3.1 UNPACKING	4
	3.2 INSTALLATION	4
	3.3 RACK MOUNTING	4
	3.4 CONNECTING NETWORK CABLE.....	5
	3.5 AC POWER	5
4	IDENTIFYING EXTERNAL COMPONENTS.....	6
	4.1 FRONT PANEL.....	6
	4.2 REAR PANEL	6
5	UNDERSTANDING LED INDICATORS	7
	5.1 POWER AND SYSTEM LEDs	7
	5.2 PORTS 1~24 STATUS LEDs	7
6	CONFIGURATION.....	8
	6.1 INSTALLING THE WEB MANAGEMENT UTILITY	8
	6.2 DISCOVERY LIST	8
	6.3 MONITOR LIST	9
	6.4 DEVICE SETTING	10
	6.5 TOOLBAR	11
	6.6 CONFIGURING THE SWITCH	11
	6.7 LOGIN	12
	6.8 MAIN MENU	14
	6.9 CONFIGURING SETUP SETTING.....	14
	6.10 MAINTENANCE SETTINGS	17
	6.11 LOGOUT.....	23
7	TECHNICAL SPECIFICATIONS	24
8	CERTIFICATIONS	25

1 About This Guide

Thank you for purchasing the freeConnect Smart G2400. This device integrates 1000Mbps Gigabit Ethernet, 100Mbps Fast Ethernet and 10Mbps Ethernet network capabilities in a highly flexible package.

1.1 Purpose

This guide discusses how to install your freeConnect Smart G2400.

1.2 Terms/Usage

In this guide, the term "Switch" (first letter upper case) refers to your freeConnect Smart G2400, and "switch" (first letter lower case) refers to Ethernet switches in general.

2 Introduction

This chapter describes the features of the freeConnect Smart G2400 and some background information about Ethernet/Fast Ethernet/Gigabit Ethernet switching technology.

2.1 Gigabit Ethernet Technology

Gigabit Ethernet is an extension of IEEE 802.3 Ethernet utilizing the same packet structure, format, and support for CSMA/CD protocol, full duplex, flow control, and management objects, but with a tenfold increase in theoretical throughput over 100-Mbps Fast Ethernet and a hundredfold increase over 10-Mbps Ethernet. Since it is compatible with all 10-Mbps and 100-Mbps Ethernet environments, Gigabit Ethernet provides a straightforward upgrade without wasting a company's existing investment in hardware, software, and trained personnel.

The increased speed and extra bandwidth offered by Gigabit Ethernet is essential to coping with the network bottlenecks that frequently develop as computers and their busses get faster and more users use applications that generate more traffic. Upgrading key components, such as your backbone and servers to Gigabit Ethernet can greatly improve network response times as well as significantly speed up the traffic between your subnets.

Gigabit Ethernet enables fast optical fiber connections to support video conferencing, complex imaging, and similar data-intensive applications. Likewise, since data transfers occur 10 times faster than Fast Ethernet, servers outfitted with Gigabit Ethernet NIC's are able to perform 10 times the number of operations in the same amount of time.

In addition, the phenomenal bandwidth delivered by Gigabit Ethernet is the most cost-effective method to take advantage of today's and tomorrow's rapidly improving switching and routing internetworking technologies.

2.2 Fast Ethernet Technology

The growing importance of LANs and the increasing complexity of desktop computing applications are fueling the need for high performance networks. A number of high-speed LAN technologies have been proposed to provide greater bandwidth and improve client/server response times. Among them, 100BASE-T (Fast Ethernet) provides a non-disruptive, smooth evolution from the current 10BASE-T technology. The non-disruptive and smooth evolution nature, and the large installed market base, virtually guarantees cost-effective and high performance Fast Ethernet solutions.

100Mbps Fast Ethernet is a standard specified by the IEEE 802.3 LAN committee. It is an extension of the 10Mbps Ethernet standard with the ability to transmit and receive data at 100Mbps, while maintaining the CSMA/CD Ethernet protocol. Since the 100Mbps Fast Ethernet is compatible with all other 10Mbps Ethernet environments, it provides a straightforward upgrade and takes advantage of the existing investment in hardware, software, and personnel training.

2.3 VLAN (Virtual Local Area Network)

A VLAN is a group of end-stations that are not constrained by their physical location and can communicate as if a common broadcast domain, a LAN. The primary utility of using VLAN is to reduce latency and need for routers, using faster switching instead. Other VLAN uses include:

Security: Security is increased with the reduction of opportunity in eavesdropping on a broadcast network because data will be switched to only the users within the same VLAN.

Cost Reduction: VLANs can be used to create multiple broadcast domains, thus eliminating the need of expensive routers.

Port-based (or port-group) VLAN is the common method of implementing a VLAN, and is the one supplied in the Switch.

2.4 Features

- 24x10/100/1000Mbps Auto-negotiation Gigabit Ethernet ports
- All RJ45 ports support auto MDI/MDIX, so there is no need to use cross-over cables or an up-link port
- Half duplex transfer mode for connection speed 10Mbps and 100Mbps
- Full duplex transfer mode for connection speed of 10Mbps, 100Mbps and 1000Mbps
- Wire speed reception and transmission
- Store-and-Forward switching scheme capability to support rate adaptation and ensure data integrity
- Up to 8k unicast addresses entities per device, self-learning, and table aging
- 4Mbits packet buffer
- Supports IEEE 802.3x flow control for full-duplex mode ports
- Supports Port-base VLAN
- Supports Port-base QoS
- Supports Port Trunking
- Supports Port Mirroring
- Supports Port-setting for Speed/Disable, Flow control
- Easy configuration via Web Browser
- Easy setting via Web Management Utility
- Standard 19" Rack-mount size

3 Unpacking and Installation

This chapter provides unpacking and installation information for the Switch.

3.1 Unpacking

Open the box and carefully unpacks its contents. The box should contain the following items:

- One freeConnect Smart G2400
- One AC power cord, suitable for your area's electrical power connections
- Four rubber feet to be used for shock cushioning
- Screws and two mounting brackets
- CD-ROM with Web Management Utility and User's Guide

If any item is found missing or damaged, please contact your local reseller for replacement.

3.2 Installation

The site where you install the hub stack may greatly affect its performance. When installing the unit, consider the following pointers:

- Install the Switch in a fairly cool and dry place. See **Technical Specifications** for the acceptable temperature and humidity operating ranges.
- Install the Switch in a site free from strong electromagnetic field generators (such as motors), vibration, dust, and direct exposure to sunlight.
- Leave at least 4" (10cm) of space at the front and rear of the Switch for ventilation.
- Install the Switch on a sturdy, level surface that can support its weight, or in an EIA standard-size equipment rack. For information on rack installation, see the next section, Rack Mounting.
- When installing the Switch on a level surface, attach the rubber feet to the bottom of each device (Figure 1). The rubber feet cushion the Switch and protect the case and surface from scratching.

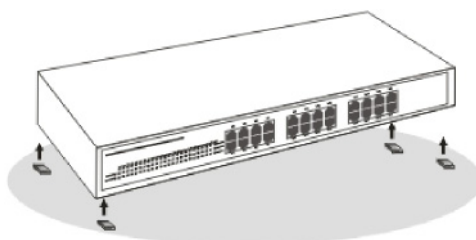


Figure 1: Attach the feet to the Switch

3.3 Rack Mounting

The Switch can be mounted in an EIA standard-size, 19-inch rack, which can be placed in a wiring closet with other equipment. Attach the mounting brackets to the switch's front panel (one on each side), and secure them with the screws provided (Figure 2).

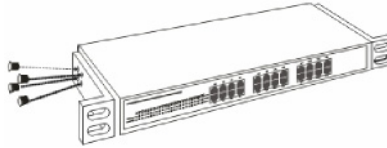


Figure 2: Attach the brackets to the Switch

Then, use the screws provided with the rack to mount each switch in the rack (Figure 3).

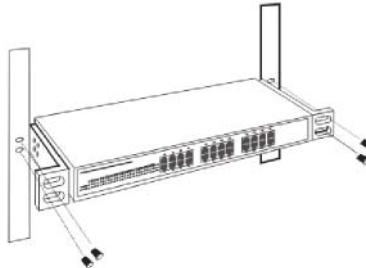


Figure 3: Mount the Switch in the rack

3.4 Connecting Network Cable

The Switch supports 1000Mbps Gigabit Ethernet that runs in Auto-negotiation mode and 10Mbps Ethernet or 100Mbps Fast Ethernet that runs both in half and full duplex mode and 1000Mbps Gigabit Ethernet runs in full duplex mode using four pair of Category 5 Cable (Category 5e Cable or better is required for Gigabit Ethernet).

These RJ-45 ports support Auto-MDIX meaning that the Switch can automatically switch between MDI-II and MDI-X types, allowing you to use any cable without worrying about whether it is a straight-through or crossover RJ-45 cable.

3.5 AC Power

The Switch uses an AC power supply operating at 100-240V AC, 50-60 Hz. The power switch is located at the rear of the unit adjacent to the AC power connector and the system fan. The switch's power supply will adjust to the local power source automatically and the unit can be turned on any number of Ethernet cable connected to it.

4 Identifying External Components

This chapter describes the front panel, rear panel, and LED indicators of the Switch.

4.1 Front Panel

The figure below (Figure 4) shows the front panels of the Switch.



Figure 4: Front panel of the Switch

LED Indicator:

Comprehensive LED indicators display the status of the switch and the network (see the LED Indicators section below).

Gigabit Ethernet Ports (Port 1~24):

The Switch is equipped with two Gigabit copper ports which support auto negotiating 10/100/1000Mbps and auto MDI/MDIX crossover detection. The support for automatic MDI/MDIX crossover detection provides true “plug and play” capability, you just need to plug the network cable into the Switch and don’t need to worry if the end node is a computer, switch, or other network device. These two ports can operate in half-duplex mode for 10/100Mbps and full-duplex mode for 10/100/1000Mbps.

4.2 Rear Panel



Figure 5: Rear panel of the Switch

AC Power Connector:

This is a three-pronged connector that supports the power cord. Plug in the female connector of the provided power cord into this connector, and the male into a power outlet. Supported input voltage range is 100-240V AC at 50-60Hz.

Reset:

The Reset button is used to reset all of the settings back to the factory default.

Note: Be sure that you record the settings of your Switch before performing a reset, as all settings will be erased after pressing the “Reset” button.

5 Understanding LED Indicators

The front panel LEDs provides instant status feedback and helps monitor and troubleshoot when needed (Figure 6).

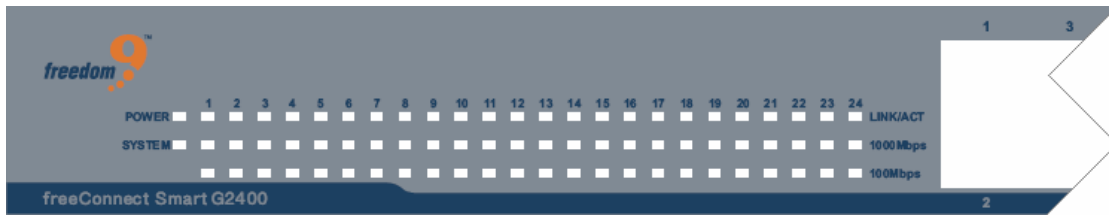


Figure 6: LED indicators of the Switch

5.1 Power and System LEDs

Power: Power Indicator

On: The Switch is receiving power.

Off: The Switch is not receiving power or the power cord has an improper connection.

System: CPU Indicator

Flashing: The CPU is working.

On: The CPU is idling.

Off: The unit is off.

5.2 Ports 1~24 Status LEDs

Link/ACT: Link/Activity

On: The port is successfully connected to an Ethernet network.

Flashing: The port is transmitting or receiving data.

Off: The port is disconnected.

1000Mbps

On: The port is connected to a gigabit Ethernet connection.

Off: The port is connected to a 10Mbps or 100Mbps Ethernet connection or is disconnected.

100Mbps

On: The port is connected to a 100Mbps Ethernet connection.

Off: The port is connected to a 10Mbps or 1000Mbps Ethernet connection or is disconnected.

6 Configuration

You can configure features such as VLANs, trunking, and QoS using the Switch's web interface.

With the provided Web Management Utility, you can easily discover all the Web Smart Switches on your network, assign IP addresses to them, change the admin password, and upgrade the firmware.

6.1 Installing the Web Management Utility

The following gives instructions guiding you through the installation of the Web Management utility.

1. Insert the Utility CD in the CD-ROM Drive.
1. From the **Start Menu** on the Windows desktop, choose "Run..."
2. In the "Run..." dialog box, type D:\setup.exe (Where "D:\\" is the drive letter of your CD-ROM drive) and click "OK".
3. Follow the on-screen instructions to install the utility.
4. Upon completion, go to Program Files → Web Management_UTILITY and run the Web Management Utility. (Figure 7.)

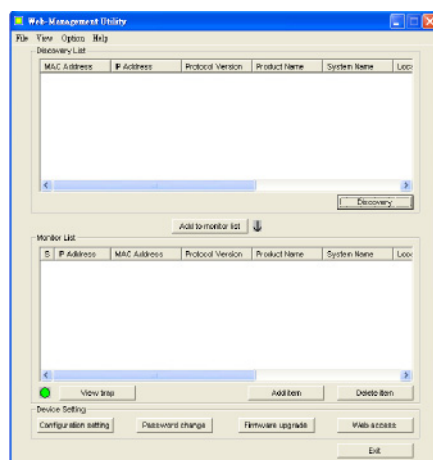


Figure 7: Web Management Utility

The Web Management Utility is divided into four parts: **Discovery List**, **Monitor List**, **Device Setting** and **Toolbar**. The sections below provide details for each section.

6.2 Discovery List

This window displays the list of recognized Web Smart switches that are connected to the network.

Click the "**Discovery**" button to begin searching for Switches on the network. This process may take some time, depending on your network configuration.

Once the Switches have been discovered, double-click on an entry, or select a switch and click the "**Add to monitor list**" button to move a Switch from the Discovery List to the Monitor List.

Column Heading Definitions:


- **MAC Address:** The Switch's MAC Address.
- **IP Address:** The current IP address of the device.

- **Protocol version:** The version of the Utility protocol.
- **Product Name:** The Switch's product name.
- **System Name:** The appointed device system name.
- **Location:** Where the device is located.
- **Trap IP:** The IP where Traps are to be sent.
- **Subnet Mask:** The Subnet Mask of the device.
- **Gateway:** The Gateway of the device.

6.3 Monitor List

To monitor a Switch, it needs to be added to the Monitor List. You will be able to manage and view trap events for the Switches in this list.

System word definitions in the Monitor List:

- **S:** The status of the Switch; an icon () before the switch name indicates that the switch is off or not accessible.
- **IP Address:** The current IP address of the device.
- **MAC Address:** The Switch's MAC Address.
- **Protocol version:** The version of the Utility protocol.
- **Product Name:** The Switch's product name.
- **System Name:** The appointed device system name.
- **Location:** Where the device is located.
- **Trap IP:** The IP where Traps are to be sent.
- **Subnet Mask:** The Subnet Mask of the device.
- **Gateway:** The Gateway of the device.

View Trap: The View Trap function allows you to view events that occur on the Switch.

The icon beside the “**View Trap**” button indicates if there is a new trap that has not been viewed yet. When the icon is green, there are no new traps available. When the icon is red, there are new traps waiting to be viewed (Figure 8).

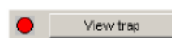



Figure 8: Trap Indicator

When the “View Trap” button is clicked, a Trap Information window will appear showing the trap information including the Time, Device IP and the Event that occurred (Figure 9).

The symbol “” represents traps that have not been viewed yet. This symbol will disappear after you review and click on the event record.

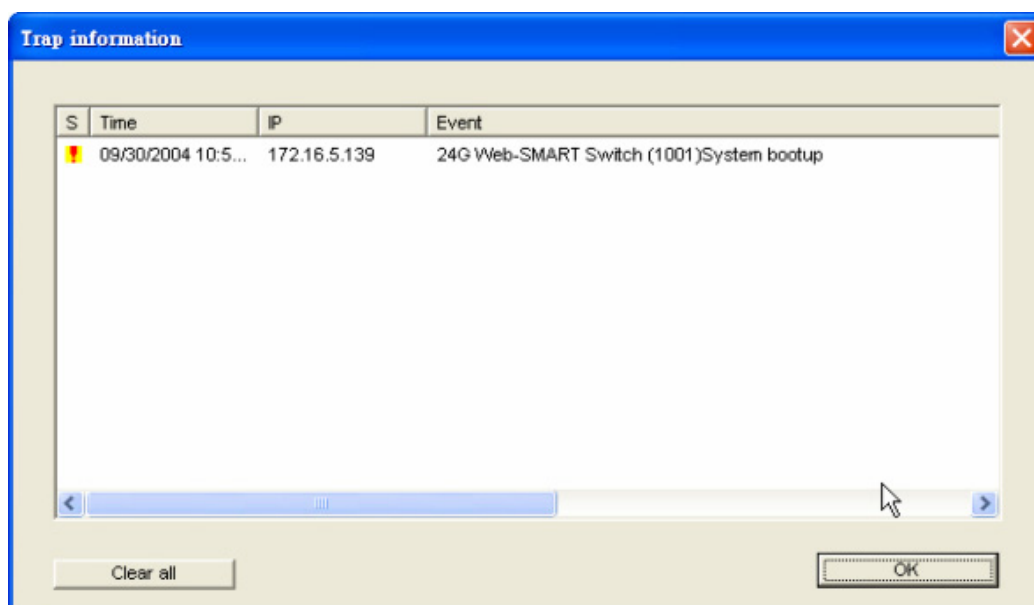


Figure 9: Trap Information

Note: In order to receive Trap information, the Switch has to be configured with the proper Trap IP and Trap Events in the Web browser, which are available in the Trap Setting Menu. Refer to the appropriate section for details.

Add Item: Allows you to add a Switch to the Monitor List manually by entering the IP Address of the device that you want to monitor.

Delete Item: Allows you to delete the Switch from the Monitor List.

6.4 Device Setting

You can configure the Switch by using the buttons in the Device Setting section at the bottom of the window.

Configuration Setting: From this window, you can set the IP Address, Subnet Mask, Gateway, Set Trap to (Trap IP Address), System Name and Location of the Switch.

Select the device in the Discovery list or Monitor List and click “**Configuration Setting**”. The Configuration Setting window will open (Figure 10). After making the desired changes, you enter the password for the Switch and click “**Set**” to save the changes to the Switch.

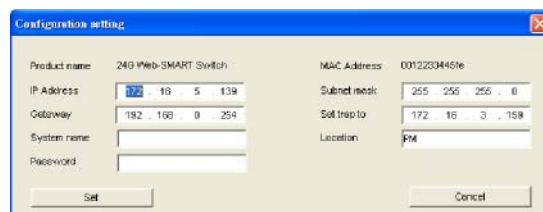


Figure 10: Configuration Setting Window

Password Change: This option allows you to change the password for the Switch. After clicking the button to open the Change Password Window (Figure 11), enter the new password in both the “**New password**” field and “**Confirm password**” field. You also have to enter the current password for the Switch in the “Original password” field. Click “**Set**” to save the changes.

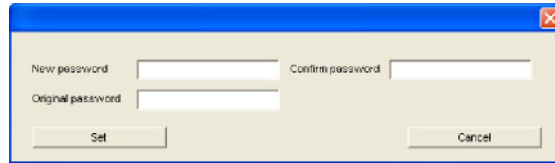


Figure 11: Password Change

Firmware Upgrade: If a new firmware becomes available, use this option to perform a firmware upgrade on the device (Figure 12). You will need to enter the location of the file on the local computer, as well as the password for the Switch in order to perform an upgrade. **Warning:** Do not turn off the Switch or the computer while a firmware upgrade is in process, it may result in corruption of the firmware on the Switch.

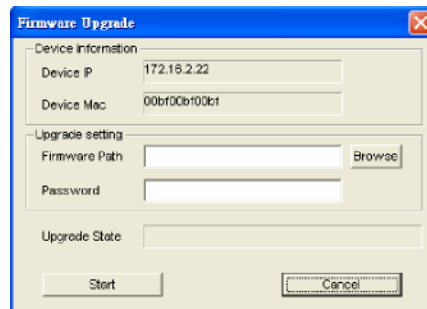


Figure 12: Firmware Upgrade

Web Access: Double click on a Switch in the Monitor List, or select a device in the Monitor List and click the “**Web Access**” button to open its web interface in a web browser window.

6.5 Toolbar

The toolbar in the Web Management Utility has four main tabs: **File**, **View**, **Options** and **Help**.

In the “**File**” tab, there are Monitor Save, Monitor Save As, Monitor Load and Exit.

- **Monitor Save:** Saves the current Monitor List as the default. The next time the Web Management Utility is run, the default list will be loaded automatically.
- **Monitor Save As:** Saves the current Monitor List as a file on the local computer at the specified filename and file path. This file can be loaded in the future to retrieve the list.
- **Monitor Load:** Load a previously saved Monitor List (using the “**Monitor Save As**” option).
- **Exit:** Exit the Web Management Utility.

The “**View**” tab allows you to view and clear the event trap logs for the Switch.

- **View Log:** To show the event of the Web Management Utility and the device.
- **Clear Log:** Clears the event trap log.

In the “**Option**” tab, the Refresh Time function allows you to set how often the utility will update the information displayed. Available options are: **15 secs, 30 secs, 1 min, 2 min, 5 min**.

In the “**Help**” tab, the About option displays the current version of the Web Management Utility.

6.6 Configuring the Switch

The freeConnect Smart G2400 has a web interface to allow for easy configuration of the Switch. A network administrator can manage and monitor the switch from anywhere on the LAN. This section

describes how to configure the Switch's advanced functions, including:

- Port setting (Speed/Disable, Duplex mode, Flow Control and Port base QoS)
- Virtual LAN Group setting (VLAN)
- Trunking
- Port Mirroring
- System Setting
- Device status

6.7 Login

Before you access the web interface, note that you must be connected to the Switch via a network connection, and your computer must be on the same IP subnet as the switch. For example, since the default network address of the default IP address of the Web Smart Switch is **192.168.0.1**, then the manager PC should be set at 192.168.0.x (where x is a number between 2 and 254), with a subnet mask of 255.255.255.0.

1. Open your web browser (Internet Explorer 5.0 or higher is recommended).
2. Enter the IP address of the Switch in the "Address" field (Figure 13). The default is `http://192.168.0.1`.



Figure 13: Entering the IP Address

When the "**Login**" page appears (Figure 14), enter the password (the default is "**admin**") and click "**Login**" to log into the Switch.

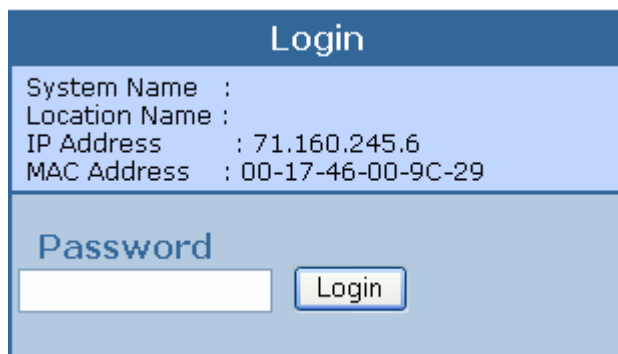


Figure 14: Login Screen

Once logged in, the main menu will be displayed along with a screen showing the status of the device (Figure 15).

freeConnect Smart G2400 User's Manual

Switch Status

Refresh

Product Name	freeConnect Smart G2400
Firmware Version	1.0.0
Protocol Version	2.001.001
IP Address	71.160.245.6
Subnet mask	255.255.255.0
Default gateway	71.160.245.1
Trap IP	0.0.0.0
MAC address	00-17-46-00-9C-29
System Name	
Location Name	
Login Timeout (minutes)	5
System UpTime	4 days 23 hours 6 mins 33 seconds

PORT Status

ID	Speed		Flow Control		QoS	ID	Speed		Flow Control		QoS
	Set	Status	Set	Status			Set	Status	Set	Status	
10/100/1000 Mbps											
01	Auto	10M Half	Enable	On	Normal	02	Auto	Down	Enable	On	Normal
03	Auto	Down	Enable	On	Normal	04	Auto	Down	Enable	On	Normal
05	Auto	Down	Enable	On	Normal	06	Auto	Down	Enable	On	Normal
07	Auto	Down	Enable	On	Normal	08	Auto	Down	Enable	On	Normal
09	Auto	Down	Enable	On	Normal	10	Auto	Down	Enable	On	Normal
11	Auto	Down	Enable	On	Normal	12	Auto	Down	Enable	On	Normal
13	Auto	Down	Enable	On	Normal	14	Auto	Down	Enable	On	Normal
15	Auto	Down	Enable	On	Normal	16	Auto	Down	Enable	On	Normal
17	Auto	Down	Enable	On	Normal	18	Auto	Down	Enable	On	Normal
19	Auto	Down	Enable	On	Normal	20	Auto	Down	Enable	On	Normal
21	Auto	Down	Enable	On	Normal	22	Auto	Down	Enable	On	Normal
23	Auto	Down	Enable	On	Normal	24	Auto	Down	Enable	On	Normal

Port-based VLAN Settings

ID	Description	Member
01	Default	01 02 03 04 05 06 07 08 09 10 11 12 13 14 15 16 17 18 19 20 21 22 23 24

TRUNK Status

ID	Member
01	Disable
02	Disable
03	Disable

Mirror Status

Sniffer Mode	Disable
Sniffer Port	
Source Port	

Figure 15: Device Status

6.8 Main Menu

The main menu on the left side of the screen (Figure 16) has the following options: Port Settings, VLAN Settings, Trunk Setting, Mirror Setting, Device Status, Statistic, System Settings, Trap Setting, Password Setting, Backup Setting, Reset Setting. Click on the item that you want to configure to open the respective window. The sections below provide details for each option.



Figure 16: Setup menu

6.9 Configuring Setup Setting

There are four items in the Setup Menu: **Port Settings**, **VLAN Settings**, **Trunk Settings**, **Mirror Settings**.

6.9.1 Port Settings

The Port Setting page (Figure 17) displays the status of the ports. Click on a port number to change the settings (Speed, Flow Control, QoS Priority, Link Status) for that port. When you need to refresh the information on the page, press the **“Refresh”** button.

The Link Status column shows the speed and duplex of the port, or **“Down”** if the port is disconnected.

PORT Setting

Refresh

ID	Speed		Flow Control		QoS	ID	Speed		Flow Control		QoS
	Set	Status	Set	Status			Set	Status	Set	Status	
10/100/1000 Mbps											
01	Auto	10M Half	Enable	On	Normal	02	Auto	Down	Enable	On	Normal
03	Auto	Down	Enable	On	Normal	04	Auto	Down	Enable	On	Normal
05	Auto	Down	Enable	On	Normal	06	Auto	Down	Enable	On	Normal
07	Auto	Down	Enable	On	Normal	08	Auto	Down	Enable	On	Normal
09	Auto	Down	Enable	On	Normal	10	Auto	Down	Enable	On	Normal
11	Auto	Down	Enable	On	Normal	12	Auto	Down	Enable	On	Normal
13	Auto	Down	Enable	On	Normal	14	Auto	Down	Enable	On	Normal
15	Auto	Down	Enable	On	Normal	16	Auto	Down	Enable	On	Normal
17	Auto	Down	Enable	On	Normal	18	Auto	Down	Enable	On	Normal
19	Auto	Down	Enable	On	Normal	20	Auto	Down	Enable	On	Normal
21	Auto	Down	Enable	On	Normal	22	Auto	Down	Enable	On	Normal
23	Auto	Down	Enable	On	Normal	24	Auto	Down	Enable	On	Normal

Figure 17: Port Setting Page

After clicking on a port number, the screen below (Figure 18) will open, allowing you to set the Speed/Disable, Flow Control and QoS settings of the port.

PORT Settings

Please be aware that speed must set as same as link partner. Otherwise, packet loss or link error might occur.

ID	Speed	Flow Control	QoS
01	Auto	Enable	Normal

Apply

Figure 18: Port Configuration

Speed/Disable:

This setting has six modes: **100M Full**, **100M Half**, **10M Full**, **10M Half**, **Auto**, **Disable**. The first four allow you to manually set the speed and duplex, Auto sets the port to detect the connection type automatically, and Disable shuts down the port.

Flow Control:

This setting determines whether or not the Switch will handle flow control. Select **Enable** to avoid data transfer overflows. Select **Disable** to turn off flow control.

When the port is set to **forced mode**, the flow control will automatically be set to **Disable**.

QoS (Quality of Service):

This setting changes the priority of the port. Connections which are more important (e.g. voice and video applications) should be set to a higher priority so the packets on these ports are transmitted first, reducing latency.

6.9.2 VLAN Settings (Virtual Local Area Network)

A VLAN is a group of ports which act as a small “virtual” network of their own, independent of the other ports. This means that the broadcast domain is restricted to the computers within a VLAN, and computers connected to different VLANs are unable to communicate with each other. The VLAN Setting page displays the current VLANs on the switch (Figure 19).

Port-based VLAN

ID	Description	Member
01	Default	01 02 03 04 05 06 07 08 09 10 11 12 13 14 15 16 17 18 19 20 21 22 23 24

Figure 19: VLAN Setting Page

To create a new VLAN group, click the “**Add Group**” button to open the new VLAN configuration window (Figure 20). Enter a description for the VLAN, and select the ports to include in the VLAN. Click “**Apply**” button to save the new VLAN.

To modify a VLAN, click on its ID number. In the new window, make the required modifications and click “**Apply**”.

To delete a VLAN, click “**Delete Group**” to open a window which allows you to select a VLAN to delete.

VLAN Setting

ID	01																																																
Description	<input type="text" value="Default"/>																																																
Port	<table border="0"> <tr> <td>01</td><td>02</td><td>03</td><td>04</td><td>05</td><td>06</td><td>07</td><td>08</td><td>09</td><td>10</td><td>11</td><td>12</td> </tr> <tr> <td><input checked="" type="checkbox"/></td><td><input checked="" type="checkbox"/></td><td><input checked="" type="checkbox"/></td><td><input checked="" type="checkbox"/></td><td><input checked="" type="checkbox"/></td><td><input checked="" type="checkbox"/></td><td><input checked="" type="checkbox"/></td><td><input checked="" type="checkbox"/></td><td><input checked="" type="checkbox"/></td><td><input checked="" type="checkbox"/></td><td><input checked="" type="checkbox"/></td><td><input checked="" type="checkbox"/></td> </tr> <tr> <td>13</td><td>14</td><td>15</td><td>16</td><td>17</td><td>18</td><td>19</td><td>20</td><td>21</td><td>22</td><td>23</td><td>24</td> </tr> <tr> <td><input checked="" type="checkbox"/></td><td><input checked="" type="checkbox"/></td><td><input checked="" type="checkbox"/></td><td><input checked="" type="checkbox"/></td><td><input checked="" type="checkbox"/></td><td><input checked="" type="checkbox"/></td><td><input checked="" type="checkbox"/></td><td><input checked="" type="checkbox"/></td><td><input checked="" type="checkbox"/></td><td><input checked="" type="checkbox"/></td><td><input checked="" type="checkbox"/></td><td><input checked="" type="checkbox"/></td> </tr> </table>	01	02	03	04	05	06	07	08	09	10	11	12	<input checked="" type="checkbox"/>	<input checked="" type="checkbox"/>	<input checked="" type="checkbox"/>	<input checked="" type="checkbox"/>	<input checked="" type="checkbox"/>	<input checked="" type="checkbox"/>	<input checked="" type="checkbox"/>	<input checked="" type="checkbox"/>	<input checked="" type="checkbox"/>	<input checked="" type="checkbox"/>	<input checked="" type="checkbox"/>	<input checked="" type="checkbox"/>	13	14	15	16	17	18	19	20	21	22	23	24	<input checked="" type="checkbox"/>	<input checked="" type="checkbox"/>	<input checked="" type="checkbox"/>	<input checked="" type="checkbox"/>	<input checked="" type="checkbox"/>	<input checked="" type="checkbox"/>	<input checked="" type="checkbox"/>	<input checked="" type="checkbox"/>	<input checked="" type="checkbox"/>	<input checked="" type="checkbox"/>	<input checked="" type="checkbox"/>	<input checked="" type="checkbox"/>
01	02	03	04	05	06	07	08	09	10	11	12																																						
<input checked="" type="checkbox"/>	<input checked="" type="checkbox"/>	<input checked="" type="checkbox"/>	<input checked="" type="checkbox"/>	<input checked="" type="checkbox"/>	<input checked="" type="checkbox"/>	<input checked="" type="checkbox"/>	<input checked="" type="checkbox"/>	<input checked="" type="checkbox"/>	<input checked="" type="checkbox"/>	<input checked="" type="checkbox"/>	<input checked="" type="checkbox"/>																																						
13	14	15	16	17	18	19	20	21	22	23	24																																						
<input checked="" type="checkbox"/>	<input checked="" type="checkbox"/>	<input checked="" type="checkbox"/>	<input checked="" type="checkbox"/>	<input checked="" type="checkbox"/>	<input checked="" type="checkbox"/>	<input checked="" type="checkbox"/>	<input checked="" type="checkbox"/>	<input checked="" type="checkbox"/>	<input checked="" type="checkbox"/>	<input checked="" type="checkbox"/>	<input checked="" type="checkbox"/>																																						

Figure 20: Creating a VLAN

6.9.3 Trunk Setting

The Trunk Setting page (Figure 21) allows you to create port trunks. Up to twelve ports can be part of the trunk, resulting in 24 Gbps of bandwidth in full duplex mode.

Note: Trunking will only work if the ports are connected to similarly trunked ports on another Switch. There are three groups of ports that can be trunked together.

Group 1: Ports 1, 2, 3, 4

Group 2: Ports 9, 10, 11, 12

Group 3: Ports 17, 18, 19, 20

For each group, you can select either to disable trunking, trunk only the first two ports in the group, or trunk all four ports in the group.

Trunk Setting

The selected trunk port setting must set to the same VLAN Group.

ID	Member
01	Disable <input type="button" value="v"/>
02	Disable <input type="button" value="v"/>
03	Disable <input type="button" value="v"/>

Disable
17,18
17,18,19,20

Figure 21: Trunk Setting Page

If using VLANs, ensure that the ports being trunked together are in the same VLAN group.

6.9.4 Mirror Setting

Port Mirroring duplicates incoming and/or outgoing packets from one port to another port allowing a network administrator to analyze the traffic on the network and make any necessary adjustments.

Configure port mirroring by assigning a source port from which to copy all packets and a sniffer port where those packets will be sent (Figure 22).

Sniffer Mode: “Tx” (transmit) mode will duplicate the data transmitted from the source port and forward it to the sniffer port. “Rx” (receive) mode will duplicate the data received from the source port and forward it to the sniffer port. “Both” will duplicate all traffic to the sniffer port.

Mirror Setting

Sniffer Mode	Disable <input type="button" value="v"/>
Sniffer Port	Disable <input type="button" value="v"/>
Source Port	Rx Tx Both

Figure 22: Mirror Setting Page

6.10 Maintenance Settings

There are six items in the Maintenance Menu: **Status, System, Trap, Password, Backup Setting,**

Restore Setting.

6.10.1 Device Status

The Device Status page displays the current status of the device (Figure 23). The screen shows the current System Status, Port Status, VLAN Status, Trunk Status and Mirror Status.

Click **“Refresh”** when you need to refresh the information.

Switch Status

Refresh

Product Name	freeConnect Smart G2400
Firmware Version	1.0.0
Protocol Version	2.001.001
IP Address	71.160.245.6
Subnet mask	255.255.255.0
Default gateway	71.160.245.1
Trap IP	0.0.0.0
MAC address	00-17-46-00-9C-29
System Name	
Location Name	
Login Timeout (minutes)	5
System UpTime	4 days 23 hours 6 mins 33 seconds

PORT Status

ID	Speed		Flow Control		QoS	ID	Speed		Flow Control		QoS
	Set	Status	Set	Status			Set	Status	Set	Status	
10/100/1000 Mbps											
01	Auto	10M Half	Enable	On	Normal	02	Auto	Down	Enable	On	Normal
03	Auto	Down	Enable	On	Normal	04	Auto	Down	Enable	On	Normal
05	Auto	Down	Enable	On	Normal	06	Auto	Down	Enable	On	Normal
07	Auto	Down	Enable	On	Normal	08	Auto	Down	Enable	On	Normal
09	Auto	Down	Enable	On	Normal	10	Auto	Down	Enable	On	Normal
11	Auto	Down	Enable	On	Normal	12	Auto	Down	Enable	On	Normal
13	Auto	Down	Enable	On	Normal	14	Auto	Down	Enable	On	Normal
15	Auto	Down	Enable	On	Normal	16	Auto	Down	Enable	On	Normal
17	Auto	Down	Enable	On	Normal	18	Auto	Down	Enable	On	Normal
19	Auto	Down	Enable	On	Normal	20	Auto	Down	Enable	On	Normal
21	Auto	Down	Enable	On	Normal	22	Auto	Down	Enable	On	Normal
23	Auto	Down	Enable	On	Normal	24	Auto	Down	Enable	On	Normal

Port-based VLAN Settings

ID	Description	Member
01	Default	01 02 03 04 05 06 07 08 09 10 11 12 13 14 15 16 17 18 19 20 21 22 23 24

TRUNK Status

ID	Member
01	Disable
02	Disable
03	Disable

Mirror Status

Sniffer Mode	Disable
Sniffer Port	
Source Port	

Figure 23: Device Status Page

6.10.2 Statistics

The Statistics Page shows the current packet transmission counters for each port (Figure 24). Clicking on a port number will display detailed statistics for the port (Figure 25).

Statistics

Refresh

Clear Counters

ID	Tx Ok	Rx Ok	Tx Error	Rx Error	ID	Tx Ok	Rx Ok	Tx Error	Rx Error
10/100/1000 Mbps									
01	1136	3664058	0	1742	02	0	0	0	0
03	0	0	0	0	04	0	0	0	0
05	0	0	0	0	06	0	0	0	0
07	0	0	0	0	08	0	0	0	0
09	0	0	0	0	10	0	0	0	0
11	0	0	0	0	12	0	0	0	0
13	0	0	0	0	14	0	0	0	0
15	0	0	0	0	16	0	0	0	0
17	0	0	0	0	18	0	0	0	0
19	0	0	0	0	20	0	0	0	0
21	0	0	0	0	22	0	0	0	0
23	0	0	0	0	24	0	0	0	0

Figure 24: Statistics Page

Port Statistics

Port	01		
TX			
Bytes	273106		
UnicastPkts	1146	NoCollisionPkts	1144
MulticastPkts	0	64 BytePkts	364
BroadcastPkts	0	65 to 127 BytePkts	459
802.3xMacControlPkts	0	128 to 255 BytePkts	10
1 CollisionPkts	1	256 to 511 BytePkts	138
2~15 CollisionsPkts	1	512 to 1023 BytePkts	150
ExcessiveCollision	0	1024 to 1518 BytePkts	26
LateCollision	0	1518 to Max BytePkts	0
RX			
Bytes	1563095086		
UnicastPkts	3645417	FragmentsErrors	2
MulticastPkts	0	OverSizeErrors	0
BroadcastPkts	17736	64 BytePkts	975968
802.3xMacControlPkts	0	65 to 127 BytePkts	1246747
FragmentsPkts	1430	128 to 255 BytePkts	409707
OverSizePkts	0	256 to 511 BytePkts	129476
FCSErrors	0	512 to 1023 BytePkts	93542
AlignmentErrors	1740	1024 to 1518 BytePkts	809454
SymbolErrors	0	1519 to Max BytePkts	0

Figure 25: Detailed Port Statistics

6.10.3 System Setting

The System Setting page (Figure 26) allows you to change the System Name, Location Name, Login Timeout, and the IP Address, Subnet Mask and Gateway of the Switch. Through the Web Management Utility, you can differentiate between multiple Switches by using the System Name and Location Name.

The Login Timeout is the amount of idle time the administrator is allowed in the web interface before

being logged out automatically for security reasons.

System Setting

System Name	<input type="text"/>
Location Name	<input type="text"/>
Login Timeout (3 - 30 Minutes)	<input type="text" value="5"/>
IP Address	
IP Address	<input type="text" value="71"/> . <input type="text" value="160"/> . <input type="text" value="245"/> . <input type="text" value="6"/>
Subnet Mask	<input type="text" value="255"/> . <input type="text" value="255"/> . <input type="text" value="255"/> . <input type="text" value="0"/>
Gateway	<input type="text" value="71"/> . <input type="text" value="160"/> . <input type="text" value="245"/> . <input type="text" value="1"/>
<input type="button" value="Apply"/>	

Figure 26: System Setting Page

6.10.4 Trap Setting

The Trap Setting page (Figure 27) allows the device to monitor for events on the Switch, and send an Event Trap to a computer on the network, which can be viewed and received using the Web Management Utility described earlier in the manual. To enable traps, enter the IP Address of the computer that will receive the traps, and select which types of events you want to receive.

Trap Setting

Trap IP	<input type="text" value="0"/> . <input type="text" value="0"/> . <input type="text" value="0"/> . <input type="text" value="0"/>
System Events	<input type="checkbox"/> device bootup <input type="checkbox"/> illegal login
<input type="button" value="Apply"/>	

Figure 27: Trap Setting Page

Device Bootup: a trap is sent when the system boots up.

Illegal Login: a trap is sent when someone is trying to log into the Switch using an incorrect password. The IP address that is attempting to log into the switch is also reported.

6.10.5 Set Password

The Set Password page (Figure 28) allows you to change the administrator password. Be sure to change this from the default immediately to prevent unauthorized access to the Switch.

If you forget the password, you will need to reset the Switch to factory defaults. To do this, press the “Reset” button on the rear panel of the Switch. Note that doing this will cause the current settings of the Switch including IP Address, VLANs, Port Settings, etc. to be lost.

Password Setting

The maximum length is 20 and is case-sensitive.

Old Password	<input type="text"/>
New Password	<input type="text"/>
Re-type New Password	<input type="text"/>

Figure 28: Set Password Page

6.10.6 Backup Setting

The Backup Setting page (Figure 29) allows you to back up the current settings of the Switch to a file that can be saved on your computer. It also allows you to restore the settings to the Switch from a backup file. Click the “**Backup**” button to generate a backup file, and select a location on your computer to save it to.

To restore a previous backup file to the Switch, you must specify the location of the backup file and click the “**Restore**” button to load the previous settings.

Backup Setting

Please be aware that the device will reboot after config restore successfully.

Backup current setting to file :

Restore saved setting from file :

Figure 29: Backup Setting Page

Note: when restoring a recorded file, the current password will not be erased.

6.10.7 Reset Setting

The Factory Reset page (Figure 30) allows you to reset the Switch back to its factory default settings. Note that all of the settings of the Switch will be reset, and the IP address of the device will be set to default setting of 192.168.0.1.

Factory Reset

Please be aware that all configuration will reset to default value.

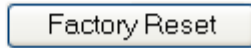


Figure 30: Reset Setting

6.11 Logout

Selecting this option will log you of the web interface (Figure 31).

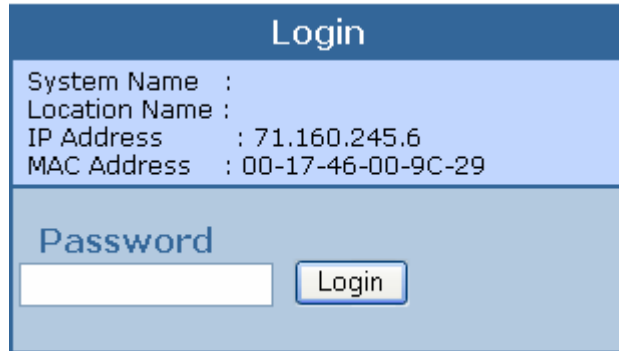
A login form with a dark blue header containing the word "Login" in white. Below the header, there is a light blue section with the following text: "System Name :", "Location Name :", "IP Address : 71.160.245.6", and "MAC Address : 00-17-46-00-9C-29". Below this section, there is a darker blue section with the word "Password" in white. Underneath "Password" is a white text input field and a "Login" button with a light blue background and a thin border.

Figure 31: Logout

7 Technical Specifications

General	
Standards	IEEE 802.3 10BASE-T Ethernet IEEE 802.3u 100BASE-TX Fast Ethernet IEEE 802.3ab 1000BASE-T Gigabit Ethernet IEEE 802.3x Full Duplex Flow Control
Protocol	CSMA/CD
Data Transfer Rate	Ethernet: 10Mbps (half duplex), 20Mbps (full-duplex) Fast Ethernet: 100Mbps (half duplex), 200Mbps (full-duplex) Gigabit Ethernet: 2000Mbps (full-duplex)
Topology	Star
Network Cables	10BASE-T: 2-pair UTP Cat. 3, 4, 5; up to 100m 100BASE-TX: 2-pair UTP Cat. 5; up to 100m 1000BASE-T: 4-pair UTP Cat. 5; up to 100m
Number of Ports	24 x 10/100/1000Mbps Auto-MDIX RJ-45 ports
Physical and Environmental	
AC Input	100-240V AC, 50-60 Hz internal universal power Supply
Power Consumption	35 Watts (Max)
Temperature	Operating: 32°F-104°F (0°C-40°C), Storage: 14°F-158°F (-10°C - 70° C)
Humidity	Operating: 10% - 90%, Storage: 5% - 90%
Dimensions (W x D x H)	17.3" x 8.3" x 1.7" (440 x 210 x 44 mm)
EMI	FCC Class A, CE Mark Class A, VCCI Class A
Safety	cUL, CB

Performance	
Transmit Method:	Store-and-forward
Filtering Address Table:	8k entries per device
Packet Filtering/Forwarding Rate	Ethernet: 10Mbps (half duplex), 20Mbps (full-duplex) Fast Ethernet: 100Mbps (half duplex), 200Mbps (full-duplex) Gigabit Ethernet: 2000Mbps (full-duplex)
MAC Address Learning	Automatic update
RAM Buffer	4Mbits per device

8 Certifications

FCC

This equipment has been tested and found to comply with Part 15 of the FCC Rules. Operation is subject to the following two conditions:

- (1) This device may not cause harmful interference
- (2) This device must accept any interference received. Including interference that may cause undesired operation.

CE – Certificate

This is a Class A product. In a domestic environment, this product may cause radio interference, in which case the user may be required to take adequate measures.

VCCI

This is a product of VCCI Class A Compliance.

